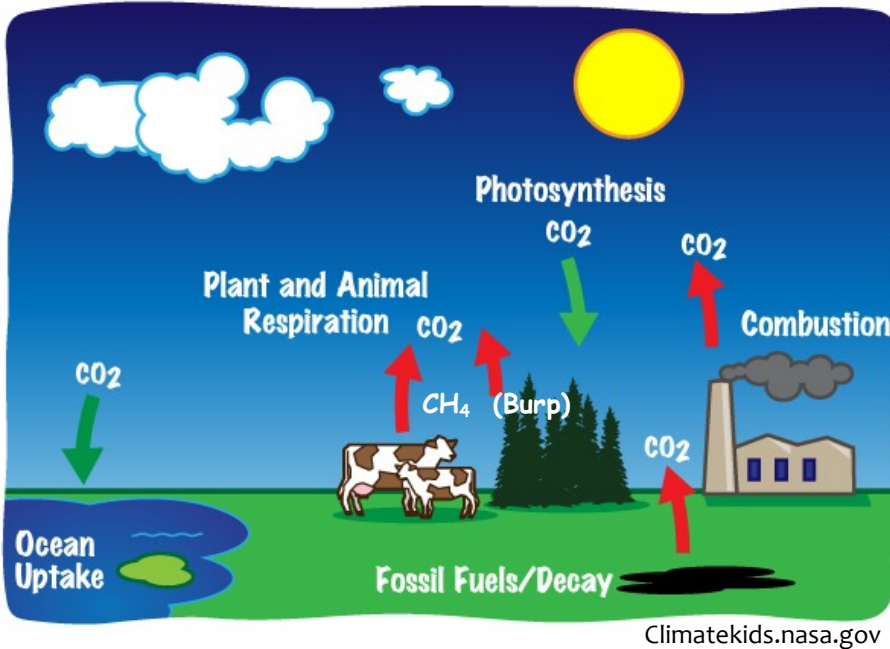




# Biofuels and the Carbon Cycle

## Carbon Cycle Basics



The carbon cycle is the process by which carbon molecules are added to the atmosphere and then removed by the natural processes of the earth.

Oceans and rivers absorb carbon in the atmosphere. Plants also absorb carbon during photosynthesis and convert it to oxygen.

Animals use the oxygen produced by plants and convert it back to carbon dioxide.

Burning fossil fuels in cars and factories also releases carbon back into the atmosphere.

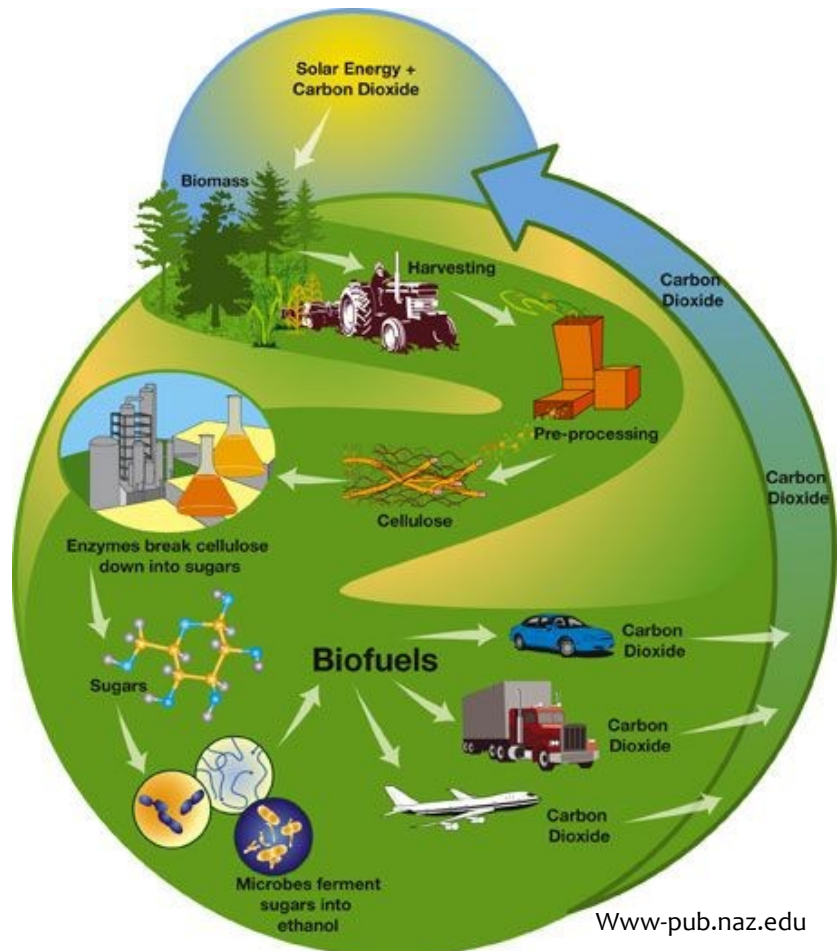
## Biofuels Basics

Biofuels are fuels made from organic matter — like plants.

Burning organic matter, or biomass, can produce energy.

The biofuels process **recycles** carbon.

Burning biomass does not add any *new* carbon to the atmosphere. It releases the carbon that was already absorbed by plants used to make the biofuels back into the atmosphere and then it is used again by new plants.



Www-pub.naz.edu

Find out more at  
[www.AdvancedBiofuelsUSA.org](http://www.AdvancedBiofuelsUSA.org)  
 Advanced Biofuels USA  
 507 North Bentz Street  
 Frederick, MD 21701

Phone:  
 301-644-1395  
 Email:  
[info@AdvancedBiofuelsUSA.org](mailto:info@AdvancedBiofuelsUSA.org)

# Biofuels Word Find

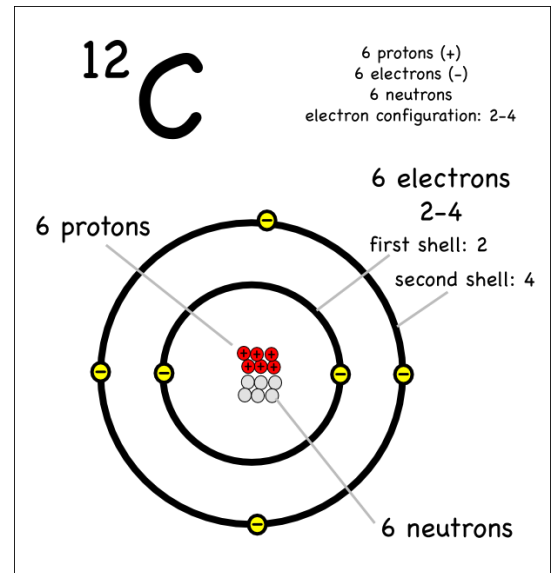
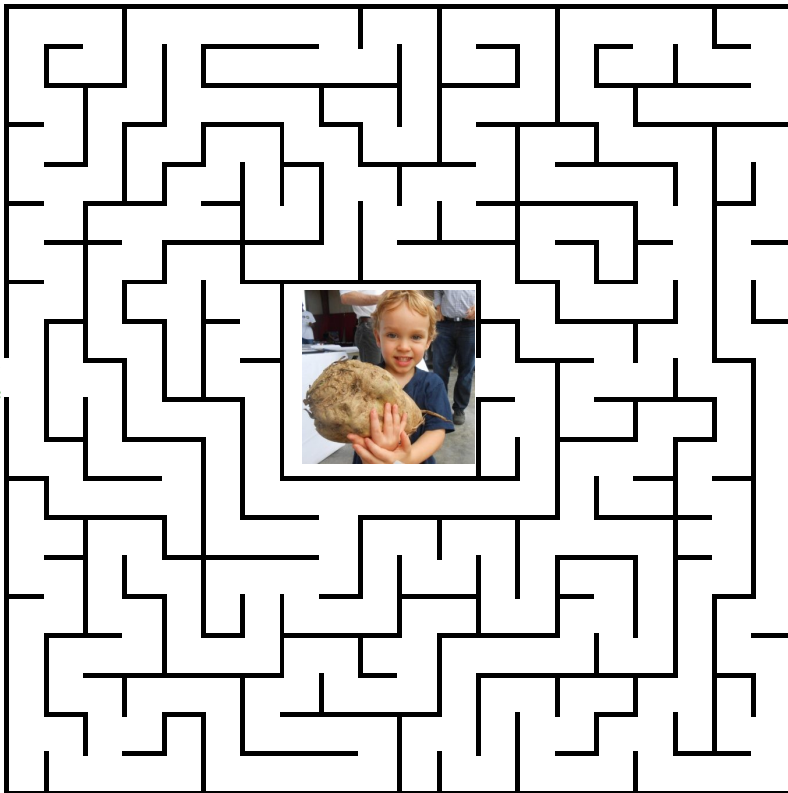
F N E L O B X S H U E A I S A  
 A O K S X X S S Y C A B I Y O  
 R H S Q O A Y B P T J S Z I H  
 F X N S M L W G M C E O Z I K  
 P Z P O I G U O E H S R G F H  
 D N I W D L S L T N K B S I T  
 T B B D K P F N L B P T L N S  
 Z N Y D H Q Y U U E M I E I T  
 P Y U E K S Z B E W C O U Z D  
 C A R B O N C Y C L E N F I E  
 H E V T N X E Z B V S C O M D  
 C N O I T S U B M O C B I M K  
 P H R E C Y C L E Z T S B L Z  
 P F J W C X D A K E F J Y A S  
 F K P Z L V K V N I E A S O I

ABSORPTION  
 ATMOSPHERE  
 BIOFUELS  
 BIOMASS  
 CARBONCYCLE  
 CELLULOSE  
 COMBUSTION  
 FOSSILFUELS  
 OXYGEN  
 PHOTOSYNTHESIS  
 RECYCLE



## Things to Know About Carbon Atoms

## Find the Energy Beet



## Facts About Carbon

- \*Carbon makes up only about 0.04% of the atmosphere.
- \*Carbon is a key ingredient to life; it makes up 20% of the weight of living organisms.
- \*Carbon can form more compounds than any other element!
- \*Carbon has the highest melting point of all elements: 6332°F!